

Recombinant expression of marine shrimp lysozyme in *Escherichia coli*

Enrique de-la-Re-Vega

Maestría en Ciencias en Acuicultura-DICTUS
Universidad de Sonora
Rosales y Blvd., Transversal
Hermosillo Sonora 83000 México
Tel: 52 662 2892400
Fax: 52 662 2800421
E-mail: enrique_delare@biomol.ciad.mx

Karina D. García-Orozco

Laboratorio de Biología Molecular de Organismos Acuáticos
Centro de Investigación en Alimentación y Desarrollo, A.C.
Carretera a la Victoria, Km. 0.6
P.O. Box 1735
Hermosillo Sonora 83000, México
Tel: 52 662 289 24 00
Fax: 52 662 280 04 21
E-mail: orozco@cascabel.ciad.mx

Sergio A. Calderón-Arredondo

Laboratorio de Biología Molecular de Organismos Acuáticos
Centro de Investigación en Alimentación y Desarrollo, A.C.
Carretera a la Victoria, Km. 0.6
P.O. Box 1735
Hermosillo Sonora 83000, México
Tel: 52 662 289 24 00
Fax: 52 662 280 04 21
E-mail: scalderon@biomol.ciad.mx

María Gabriela Romo-Figueroa

Laboratorio de Biología Molecular de Organismos Acuáticos
Centro de Investigación en Alimentación y Desarrollo, A.C.
Carretera a la Victoria, Km. 0.6
P.O. Box 1735
Hermosillo Sonora 83000, México
Tel: 52 662 289 24 00
Fax: 52 662 280 04 21
E-mail: mg.romo@cascabel.ciad.mx

María A. Islas-Osuna

Laboratorio de Biología Molecular de Plantas
Centro de Investigación en Alimentación y Desarrollo, A.C.
Carretera a la Victoria, Km. 0.6
P.O. Box 1735
Hermosillo Sonora 83000, México
Tel: 52 662 289 24 00
Fax: 52 662 280 04 21
E-mail: islasosu@cascabel.ciad.mx

Gloria M. Yepiz-Plascencia

Laboratorio de Biología Molecular de Organismos Acuáticos
Centro de Investigación en Alimentación y Desarrollo, A.C.
Carretera a la Victoria, Km. 0.6
P.O. Box 1735
Hermosillo Sonora 83000, México
Tel: 52 662 289 24 00
Fax: 52 662 280 04 21
E-mail: gyepiz@cascabel.ciad.mx

Rogerio R. Sotelo-Mundo*

Laboratorio de Biología Molecular de Organismos Acuáticos
Centro de Investigación en Alimentación y Desarrollo, A.C.
Carretera a la Victoria, Km. 0.6
P.O. Box 1735

Hermosillo Sonora 83000, México
Tel: 52 662 289 24 00
Fax: 52 662 280 04 21
E-mail : rrs@cascabel.ciad.mx

<http://biomol.ciad.mx>

Financial support: Grant IFS AA/3230 from International Foundation for Science (Sweden) and by grants 36928-B and 36926-B from CONACyT (National Research Council of Mexico). E. de-la Re-Vega, S. A. Calderón-Arredondo and M.G. Romo-Figueroa received scholarships from CONACyT, México.

Keywords: crustacea, lysozyme, penaeidae, *Penaeus vannamei*, recombinant expression, refolding, shrimp.

Abbreviations:

DTT: 1,4-dithiothreitol;
Gnd-HCl: guanidine hydrochloride;
Lyz: Lysozyme;
PCR: polymerase chain reaction;
PMSF: Phenylmethylsulphonyl fluoride.

Shrimp Lysozyme (Lyz) is a key component of the antibacterial response as part of the innate defense in Crustacea; however, it has not been possible to purify this protein because of the very low amount present in the shrimp blood cells (hemocytes). In an effort to produce enough protein to study its function and biochemical properties we have overexpressed Lysozyme from marine shrimp (*Penaeus vannamei*) in *E. coli*. A bacterial protein expression system based on the T7 polymerase promoter was used. Although Lyz was produced as insoluble protein in inclusion bodies, its refolding led to an active protein with a yield of ~10%. Details of the protein recombinant expression techniques applied to this shrimp protein are presented.

Recombinant expression and refolding of proteins have provided a tool to study protein function, biochemical properties and structure where availability or yield precludes purification from the tissue of interest (Andersen and Krummen, 2002). Nowadays, many proteins are obtained by these techniques, in particular unidentified open reading frames from newly sequenced genomes, to identify the function of hypothetical polypeptides without apparent similarity to known proteins.

Shrimp aquaculture is an important activity worldwide, providing employment and income to developing countries. This activity has been stricken by severe epizooties, both bacterial and viral. Therefore, there is a longstanding interest in understanding the mechanisms of antibacterial and recognition events that mediate the innate response of Crustaceans to microorganisms (Hultmark, 1996; Vargas-Albores and Yepiz-Plascencia, 2000; Yepiz-Plascencia et al. 2000). Efforts have focused on the purification and characterization of hemolymph (blood) proteins. Between them, Lysozyme is one of the earliest known antibacterial proteins, ubiquitous from phages to humans. In invertebrates, it is well known that the Lysozyme

expression is regulated and responds to a bacterial challenge. Production of recombinant Lyz was possible after the cloning of the Lyz cDNA (Sotelo-Mundo et al. 2003). Furthermore, to this date it has not been reported the isolation or purification of shrimp Lyz from tissues or blood cells (hemocytes), which are the first line of innate defense in Crustacea.

Bacterial expression is the most widely protein expression system used. However, it has important drawbacks that must be considered when expressing secreted or post-translationally modified proteins (De Bernardez Clark, 1998). Bacteria synthesize proteins in the cytosol where disulfide bonds and glycosylation do not occur. Therefore, the recombinant polypeptides that are not folded are stored as inclusion bodies. These apparent problems can be advantageous due to the high yields of denatured protein that may be synthetically refolded. Refolding involves formation of disulfides bonds and the exchange of scrambled incorrect disulfides by including small amounts of b-mercaptoethanol, or oxidized and reduced glutathione to increase the yield of properly folded proteins (Armstrong et al. 1999).

One of the most common protein expression systems in *Escherichia coli* is based on the controlled expression of the gene of interest by the T7 RNA polymerase, under the control of the *lac* operon (Studier and Moffatt, 1986). In this system, the coding region of the protein to be expressed is inserted in a frame into the multiple cloning site provided in the expression vector. The coding region is amplified by PCR, and both insert and vector are digested with the corresponding restriction enzymes. If required, the plasmid vector is dephosphorylated to prevent recircularization during ligation to produce the recombinant vector (Sambrook et al. 2001). This paper describes details about the primer design, directional cloning, expression and activity of the shrimp Lyz protein.

*Corresponding author

MATERIALS AND METHODS

Bacterial strains, plasmids and enzymes

Escherichia coli strain DH5a (Stratagene, La Jolla CA, USA) was used for cloning of the DNA construct. *E. coli* BL21 Rosseta Gami-LacZ and vector pET5a were used for expression of Lyz. The expression strain and vector were from Novagen (San Diego CA, USA). Restriction enzymes, *Taq* DNA polymerase, T4 DNA ligase and shrimp alkaline phosphatase were from New England Biolabs (Beverly MA, USA), Gibco-Invitrogen (Carlsbad, CA, USA) or Promega (Madison, WI, USA). Oligonucleotide primers were synthesized by Sigma-Genosys (The Woodlands, TX, USA). Spin-columns for PCR cleaning were from Qiagen (Valencia, CA, USA). Phosphate buffers were prepared by the combination of monosodic and disodic sodium phosphate to adjust the pH.

Lyz cloning procedures

Recombinant techniques to make the shrimp Lyz expression construct were as described (Sambrook et al. 2001) and based on the general cloning strategy shown in [Figure 1](#). It was prepared as follows: the Lysozyme coding region (Lyz DNA, GenBank accession number AAL23948) was amplified by PCR with primers PV-Lyz-NdeI 5' GGAATTCCATATGTGCGACGCCAAGGTCTTC 3' and PV-Lyz-BamHI 5' CGGGATCCTTAGAACGGGAAGACAGAG 3'. These primers were designed to contain the restriction sites *Nde*I and *Bam*HI, which are underlined in the primer sequence and included in the multiple cloning site of the pET5a expression vector. Several additional hanging bases were included at the 5'-end of the primers to facilitate digestion, as suggested by the restriction enzyme manufacturers, which were GGAATTC for *Nde*I and CG for *Bam*HI. The coding region amplified by these primers corresponds to 143 amino acids ([Figure 2](#)).

The template for Lyz PCR was a shrimp hemocyte phagemid cDNA library (Sotelo-Mundo et al. 2003). PCR was carried out in a 50 µl reaction containing 50 mM KCl, 10 mM Tris-HCl, (pH 8.3), 250 µM dNTPs (each), 1.5 mM MgCl₂, 0.5 µM each primer, 15 ml of the cDNA library and 0.2 µl (1 U) of *Taq* DNA polymerase. An initial phage burst cycle at 94°C during 10 min was included for appropriate amplification of the library.

The PCR conditions were as follows: one cycle at 94°C, 3 min; 55°C, 1 min; 72°C, 3 min; one cycle at 94°C, 3 min; 42°C, 1 min; 72°C, 3 min; 33 cycles at 94°C, 3 min; 52°C, 1 min; 72°C, 3 min; and one final extension step at 72°C for 10 min. The PCR products were analyzed by agarose gel electrophoresis. Vector and insert were digested with *Bam*HI as recommended by the manufacturer. Digested DNA was cleaned with a silica adsorption column (QIAquick, Qiagen), and subjected to a second digestion using *Nde*I, then cleaned again by spin column.

The pET5a vector and Lyz DNA were ligated overnight at 4°C in a 10 µl reaction containing 2.5 µl (0.5µg) of Lyz DNA, 1.5 µl (1.5 µg) of digested pET5a, 1.0 µl (1 U) of T4 DNA ligase (Promega) and 5 µl of 2X rapid ligation buffer (60 mM Tris-HCl pH 7.8, 20 mM MgCl₂, 20 mM DTT, 2 mM ATP and 10% PEG). The ligation products were used to transform electrocompetent *E. coli* DH5a cells that were plated out in Luria Bertani (LB) agar containing 100 µg/ml of ampicillin and incubated overnight at 37°C. The identification of recombinants was done by PCR colony screening (Sambrook et al. 2001). Plasmid DNA from putative transformants was isolated by the alkaline lysis method (Sambrook et al. 2001), and positive clones were thoroughly sequenced with the primers T7 and PV-Lyz-BamHI at the GATC Sequencing Laboratory (University of Arizona, Tucson, AZ). The pET5a-Lyz construct was used

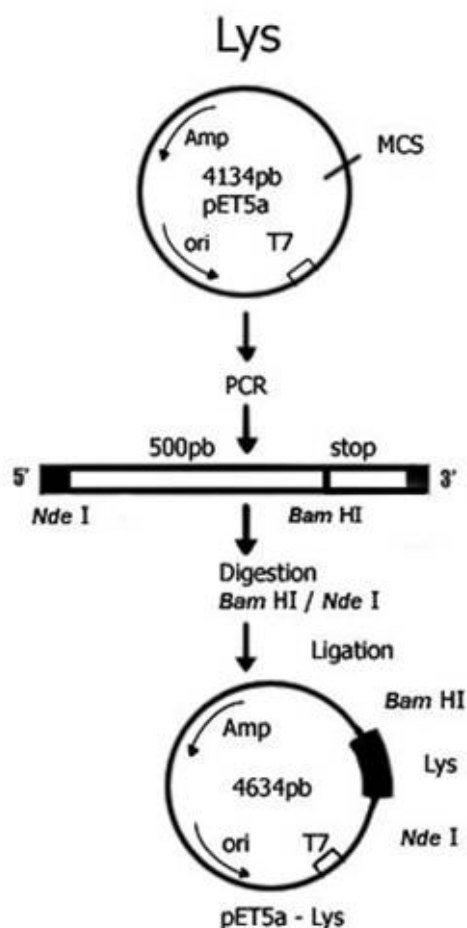


Figure 1. Cloning strategy of shrimp Lysozyme cDNA into the expression vector. The arrow indicates the direction of transcription/translation of the gene for ampicillin resistance (Amp). The position of the origin for plasmid DNA replication (*ori*) is indicated.

to transform BL21 Rosetta Gami-LacZ *E. coli* cells, which is the expression strain for recombinant protein synthesis.

Overexpression of Lyz

Bacteria were grown in LB broth containing ampicillin (100 µg/ml), kanamycin (15 µg/ml), tetracycline (12.5 µg/ml) and chloramphenicol (34 µg/ml) for Lyz expression in Rosetta Gami-LacZ. Culture in Fernbach flasks was done in an orbital shaker at 250 rpm at 37°C until optical density of 0.6 at 600 nm was reached. At this point induction was done with IPTG (isopropyl-thio-galactoside) to a final concentration of 0.4 mM and the culture was incubated for another 18 hrs.

The media was centrifuged at 5000 x g for 5 min and the bacterial pellet was washed in 0.9% NaCl (w/v) in a proportion of 20 ml of solution per g of pellet and centrifugated at 5000 x g for 5 min. The bacterial cells were resuspended with lysis buffer (100 mM Tris pH 8.0, 1 mM EDTA, 5 mM PMSF, 5 mM Benzamidine, 5 mM DTT) in a proportion of 8 ml per g of pellet and sonicated with four

pulses of 10 sec at 0°C on an ice bath, and the lysate was centrifuged at 10,000 x g for 20 min. The pellet was washed twice with 50 mM Tris-HCl, pH 7.0, 5 mM EDTA, 2 M urea, 5 mM DTT, and 2% Triton X-100, using 4 ml of solution per g of pellet and centrifuged at 22,000 x g for 30 min, discarding the supernatant. The precipitate containing the inclusion bodies was washed in the same solution as before, but without Triton X-100.

Refolding of Lyz from inclusion bodies

Washed inclusion bodies pellet were dissolved in an extraction buffer (50 mM Tris-HCl pH 7.0, 5 mM EDTA, 8 M Gdn-HCl, 5 mM DTT). Extracted inclusion bodies were centrifuged at 22,000 x g for 2 hrs at 4°C, and diluted with 50 mM Tris-HCl, pH 7.0, 5 mM EDTA, 5 mM DTT to a final concentration of 4 M Gdn-HCl. The solution was centrifuged again at 22,000 x g for 30 min at 4°C.

A search for refolding conditions was done by testing the sixteen buffers reported by Armstrong et al. (1999), by dilution of the inclusion bodies solution, incubation at 4°C

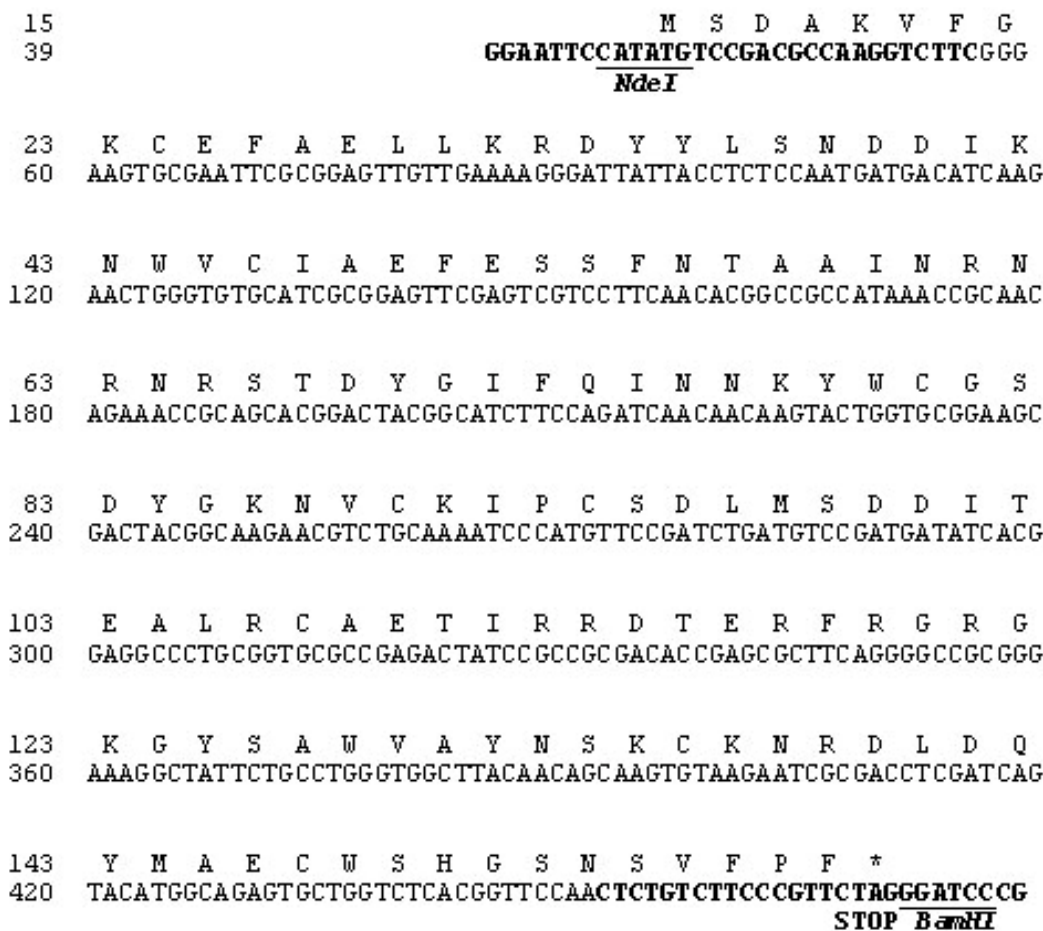


Figure 2. Design of expression primers for Lyz cloning. Position of primers PV-Lyz-NdeI and PV-Lyz-BamHI is shown in **bold** in the nucleotide sequence of the shrimp Lyz cDNA (GenBank AAL23948). The deduced amino acid sequence for Lyz is shown and the restriction sites for NdeI and BamHI are underlined.

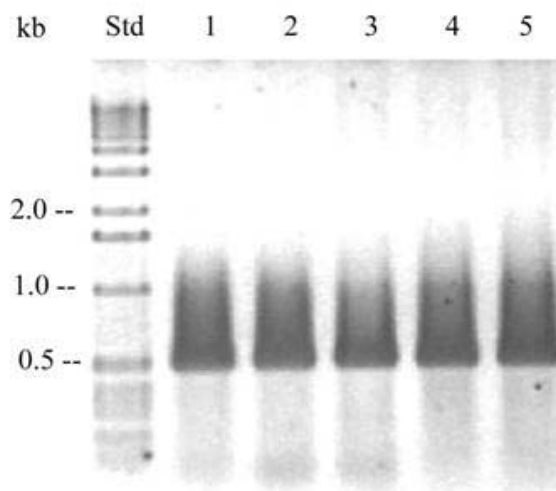


Figure 3. Lysozyme clones. Agarose gel electrophoresis of five recombinant clones identified by PCR colony. The 500 bp band corresponds to the Lyz insert. Positive (Lyz cDNA) and negative (no DNA template) controls were included in the amplifications (data not shown).

overnight with stirring, centrifugation at 10,000 x g for 15 min. Protein solutions and refolding buffers were tested for Lyz activity on the solid phase assay (see below).

Buffer #13 (55 mM Tris, pH 8.5, 1 mM reduced glutathione, 0.1 mM oxidized glutathione, 264 mM NaCl, 11 mM KCl, 550 mM Gdn-HCl and 1 mM EDTA) was used for large scale refolding of denatured Lyz, since a better yield was obtained by using it. The refolding was done using 6 kDa cut-off dialysis tubing. Two buffer exchanges of 500 ml each were done at 4°C, and supernatant was obtained by centrifugation at 20,000 x g for 30 min. This solution contains Lyz, and pure protein was isolated by ultrafiltration through a 30 kDa MW cut-off membrane (Millipore), and then concentrated using a 10 kDa cut-off membrane (Millipore). To ensure removal of contaminants, the sample was dialyzed extensively against phosphate buffer 50 mM, pH 8.0 and Lyz activity was detected.

Lysozyme activity

Shrimp Lyz activity was determined by a modification of the turbidimetric method (Shugar, 1952). In this approach, a suspension of *Micrococcus luteus* (Sigma, St. Louis MO, USA) (0.05 % w/v) in 50 mM phosphate buffer pH 8.0 mixed in 1% agarose was poured in Petri dishes. A well was done by puncture with an inverted Pasteur pipette, and known amounts of shrimp Lyz or hen egg white Lysozyme (as a control) were applied. Incubation overnight at 37°C led to halo formation where the enzyme lysed the bacteria.

RESULTS AND DISCUSSION

Lyz cDNA cloning and its expression

We obtained the recombinant construct pET5a-Lyz containing the coding region for the mature Lyz protein. Since the pET5a vector does not contain a blue/white selection system, we analyzed several putative clones by PCR colony and identified five of them containing the insert of ~500 bp that could correspond to Lyz (Figure 3). The identity of the 500 bp band was confirmed by DNA sequencing and corresponded to Lyz. Then, the construct pET5a-Lyz was re-transformed into the Rosetta Gami-*lacZ* strain for overexpression of the shrimp Lysozyme. Although the vector carries ampicillin resistance and only transformants should grow on a selective antibiotic media, transformed Rosetta Gami bacteria were also screened by PCR colony using primers PV-Lyz-BamHI (from Lysozyme) and T7 (from the vector) (data not shown) to identify the presence of pET5a-Lyz in such cells. Expression of Lyz was detected in the culture after 2 hrs of induction with IPTG by analysis of the bacterial pellet by SDS-PAGE, where the appearance of a ~17 kDa band indicates the synthesis of the recombinant Lyz (Figure 4, panel A). Soluble cytosolic and insoluble fractions of induced bacterial lysate showed that no Lyz activity was found in the soluble proteins, and by SDS-PAGE it was determined that Lyz expresses as inclusion bodies. From there, an inclusion body and refolding protocol was implemented.

